

Learn Dreamweaver CS4

Defining a site

Not only is it easy to build single web pages in Adobe® Dreamweaver® CS4, but it's just as easy to construct entire websites. In this tutorial, you will learn how to define a site to optimize site management.

REQUIREMENTS

To complete the task(s) demonstrated in this tutorial, you will need the following software and files:

- **Products** – Adobe Dreamweaver CS4
- **Sample file** – lrvid4050_dw.zip
- **Prerequisite knowledge** – None

Using the Site Definition dialog box

Defining a site is the essential first step to resolving links, checking related files, and managing assets using Dreamweaver. To define a site:

1. Create a new site using one of the following four methods:

- From the Welcome screen, choose Dreamweaver Site.
- Click Manage Sites on the Files panel. (If the Files panel is not displayed, choose Window > Files.) Click New and then choose Site from the pop-up menu.

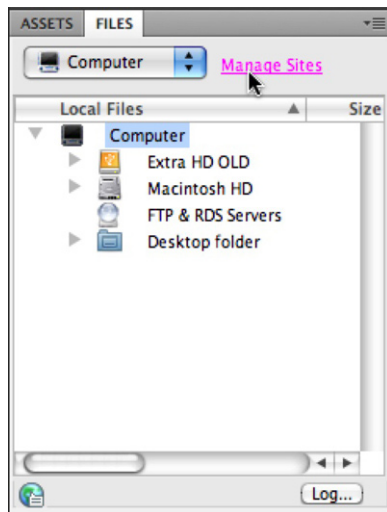


Figure 1: Creating a site from the Local Files panel



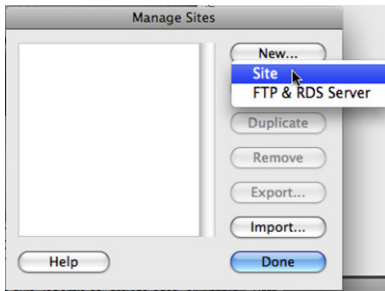


Figure 2: Selecting site from the pop-up menu

- Choose Site > New Site.
- Click the Site icon next to the Designer menu on the Standard toolbar. Choose New Site from the context menu.

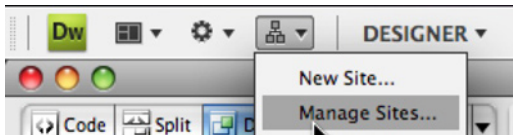


Figure 3: Creating a site from the Standard toolbar

2. With any of the above methods, the Site Definition dialog box will open.

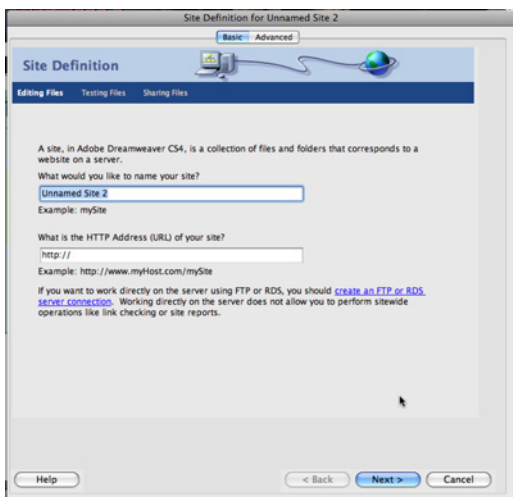


Figure 4: The Site Definition dialog box

Note: The Site Definition dialog box offers two options for defining a site. The Basic tab uses a wizard to walk you through the steps to define a new site. The Advanced tab allows you to customize settings in various categories, without providing lengthy descriptions of what those settings do. Both tabs are user-friendly, even for beginning Dreamweaver users.

3. Click the Advanced tab. Enter the name of your site in the Site Name box.

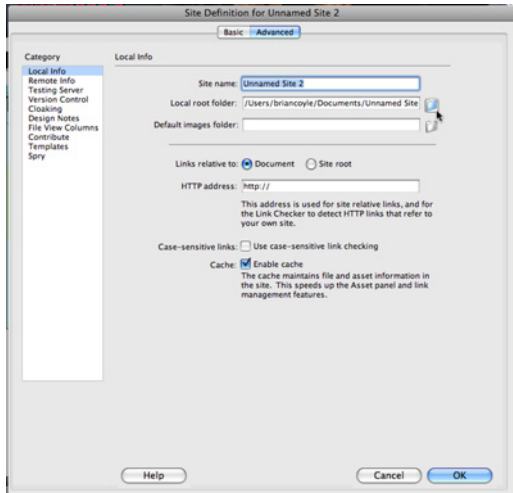


Figure 5: The Advanced tab

4. Click the Browse button next to the Local Root Folder box. Navigate to the location of your root folder (you must have set this folder up beforehand). In Mac OS, select the folder and click Choose. In Windows, choose the folder and click Select in the Open dialog box.
5. Click the Browse button next to the Default Images Folder box to open the root directory you specified in Step 4. From the root directory, open the folder where you store or plan on storing your images and click Select/Choose. Dreamweaver will automatically place images associated with the site in the designated directory.

Note: The remainder of the settings in the Advanced tab are optional. The Remote Info is necessary, however, if you plan on uploading your site to the Web.

6. Click Enable Cache. This step allows you to cache your files, which will be available in the Assets panel.

7. Click the Remote Info category in the left pane of the Advanced tab in the Site Definition dialog box. This category allows you to enter FTP and local network information. It also tells Dreamweaver where to place the finished site.

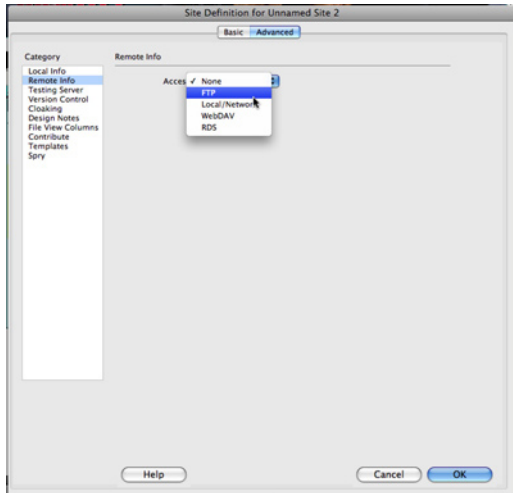


Figure 6: Accessing FTP and local network information

8. Click Testing Server in the Category pane. Use this category when using server-side technology such as ColdFusion, asp, .net, or php. This category lets Dreamweaver know where the testing server is located so that the application can preview your pages accurately.

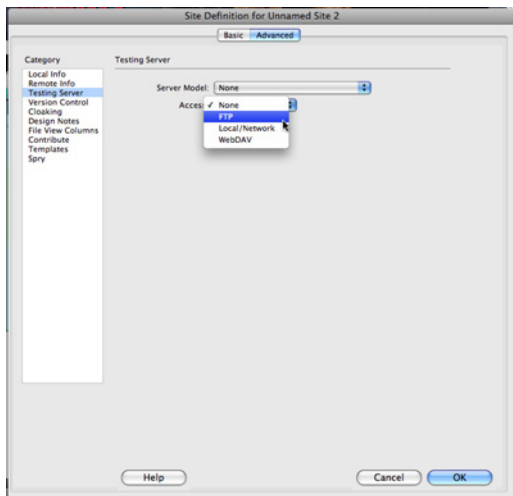


Figure 7: The Testing Server category

9. Click the Version Control category. This category is new to CS4 and is for Subversion users. It allows you manage version control from within Dreamweaver.

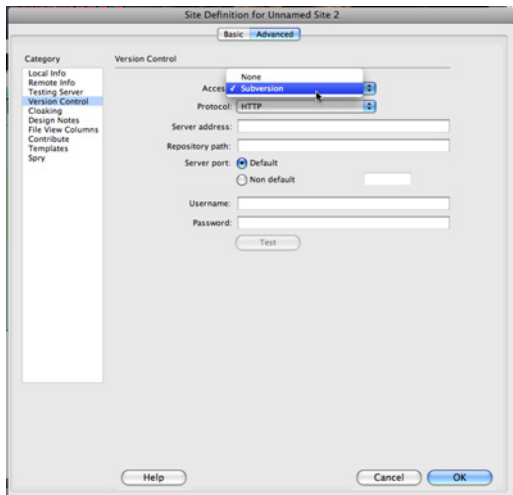


Figure 8: The Version Control category

Note: The remaining categories establish preferences for how you want Dreamweaver to manage sites and collaborative tools. For example, you can designate which files you will not upload when uploading your site, how to manage your templates, and where to locate your Spry assets.

10. Click OK. You have defined a site.

11. Go to the Files panel. You will see that you now have access to all of the files and folders associated with your site.

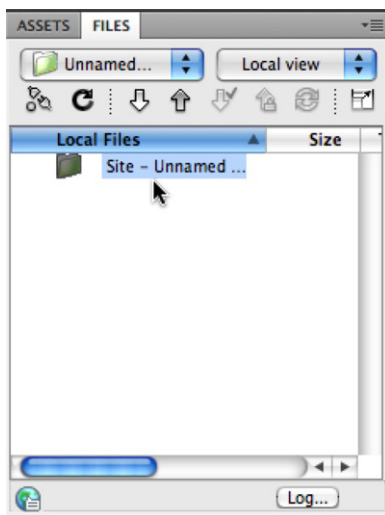


Figure 9: The Files panel

12. Go to the Assets panel. If you enabled caching during the site set-up process, you can browse through images, linked documents, and even Adobe Flash® assets.

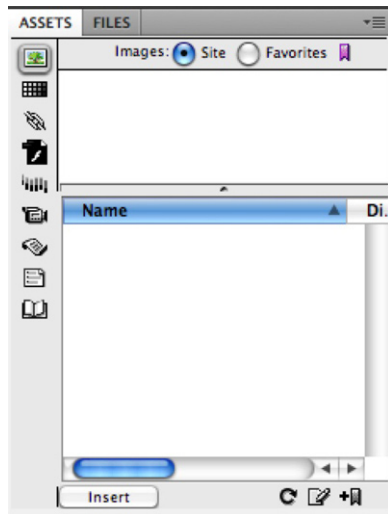


Figure 10: The Assets panel

13. To update a site at a later date, click the Site icon on the Standard toolbar. Select Manage Sites from the menu. The Manage Sites dialog box opens, listing any sites you have defined in Dreamweaver.

14. Highlight the site you want to update and click Edit. The Site Definition dialog box opens. Click OK in the Site Definition dialog box, and then click Done in the Manage Sites dialog box to apply your updates.

***Note:** If you chose the Enable Cache option during the site definition process, Dreamweaver will automatically recache the site when you make any major changes to your site definition parameters.*

Where to go from here

[Dreamweaver CS4 Help and Support Center](#)

[Learn Dreamweaver CS4](#)

[Introducing Dreamweaver CS4](#), by James Williamson

[Introducing Adobe InContext editing](#), by David Gassner

[Using views and workspaces](#), by James Williamson

[Lynda.com](#)



This work is licensed under a [Creative Commons Attribution-Noncommercial-Share Alike 3.0 Unported License](#).