

Learn Adobe Device Central CS4

# Creating After Effects mobile compositions

If you are producing video for mobile devices, Adobe® CS4 has a new workflow integrating Adobe Device Central and Adobe After Effects®. In this tutorial you will create an After Effects project and import a video clip. Using an optimal workflow helps you create outstanding video in After Effects.

## REQUIREMENTS

To complete the task(s) demonstrated in this tutorial, you will need the following software and files:

- **Products** – Adobe Device Central CS4, Adobe After Effects CS4
- **Sample file** – lrvid4110\_xp.zip
- **Prerequisite knowledge** – Intermediate knowledge of producing video for mobile devices

## Creating an After Effects composition

Integrating Adobe Device Central and After Effects to create compositions is a streamlined process in CS4.

To create an After Effects composition:

1. Create a new device set in Device Central. When you create a mobile content project directly in Device Central, you can target multiple devices with different screen dimensions and even different video players.

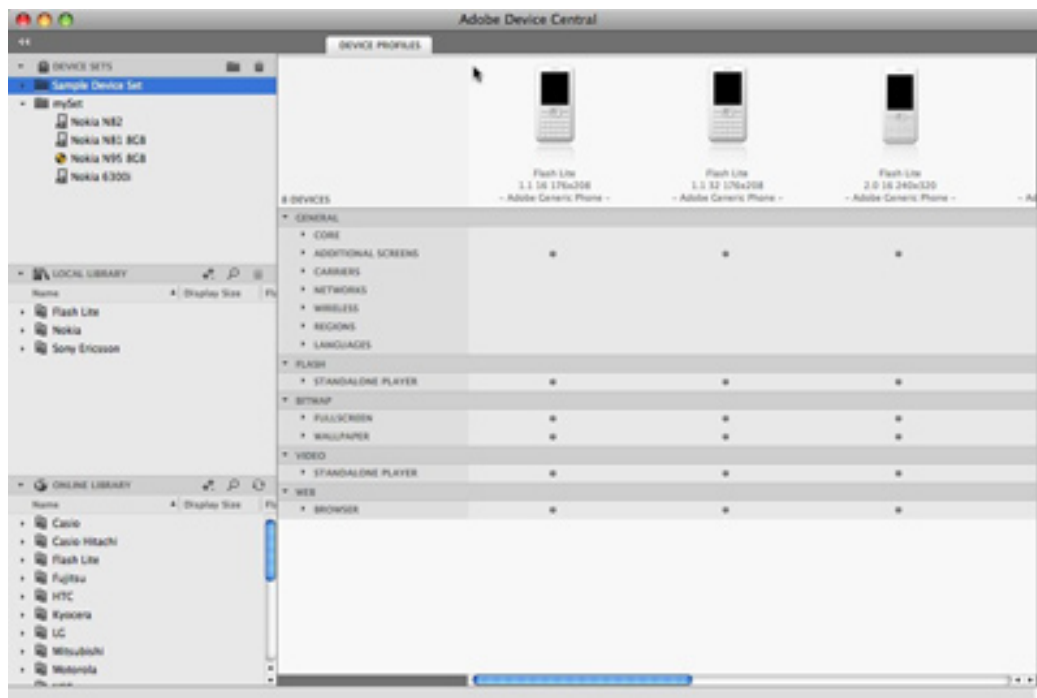


Figure 1: The Device Central Interface



© 2008 Adobe Systems Incorporated and its licensors. All rights reserved. Adobe, the Adobe logo and Adobe trademarks used in this tutorial are either registered trademarks or trademarks of Adobe Systems Incorporated and/or other countries. For more information on Adobe trademarks, please go to <http://www.adobe.com/misc/agreement.html>. All other trademarks are the property of their respective owner.

2. Choose File > New Document In > After Effects to create a new After Effects project.
3. Select Create Master Composition at the upper-left corner of the New Composition panel.
4. Click Create. A new project with built-in mobile device profiles opens automatically in After Effects.

*Note:* The device profiles appear in a folder in the Project panel labeled Device Central Comps, along with the empty Device Master composition where you will build your video project.

5. Double-click the Device Master composition in the Project panel. The Import File dialog box opens.

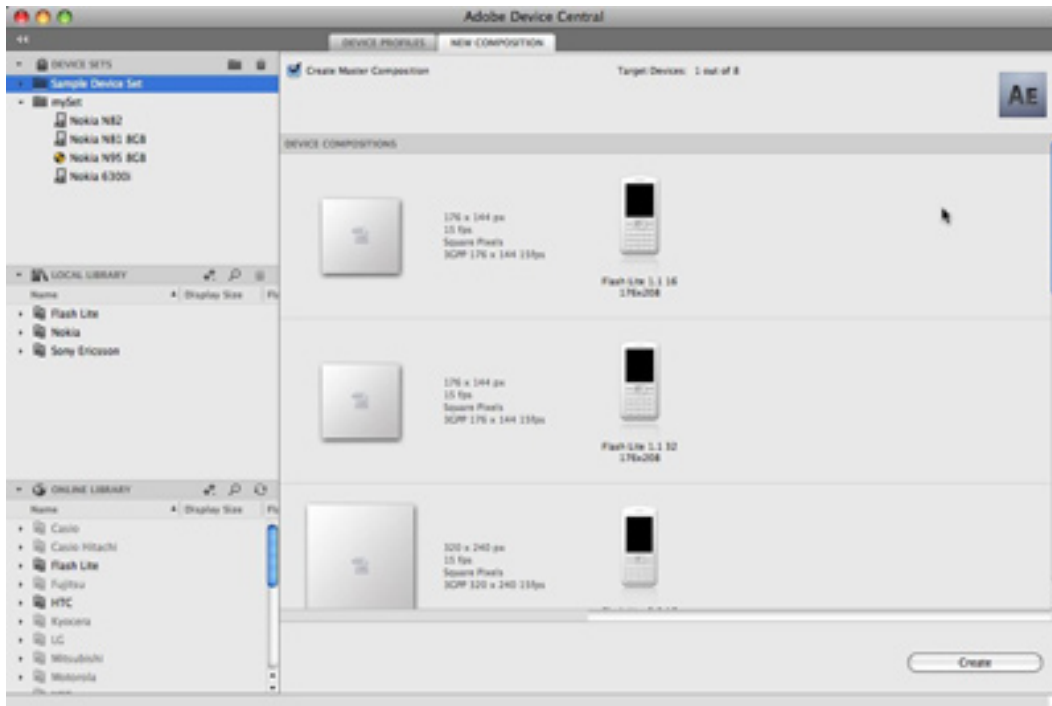


Figure 2: Importing a video file

6. Select a video and click Open to import the clip into the Project panel.

7. Drag the clip from the Project panel onto the master composition in the Composition panel.



Figure 3: Creating the master composition

8. Zoom out for a clearer view of the composition. Then, drag while holding down the Shift key to proportionally scale the video to fit the composition.

***Note:** You can inspect various mobile devices linked to After Effects and preview how the video will display in them by double-clicking the profiles in the Project panel. You may have to resize the video differently for each profile. You can also create special effects and render them for the different mobile devices.*

9. Adjust the volume on the video clip by moving the sliders in the Audio panel located in the upper-right corner of the Device Central window.

10. Preview the playback for all the devices at once by double-clicking the Preview composition from the Project panel.

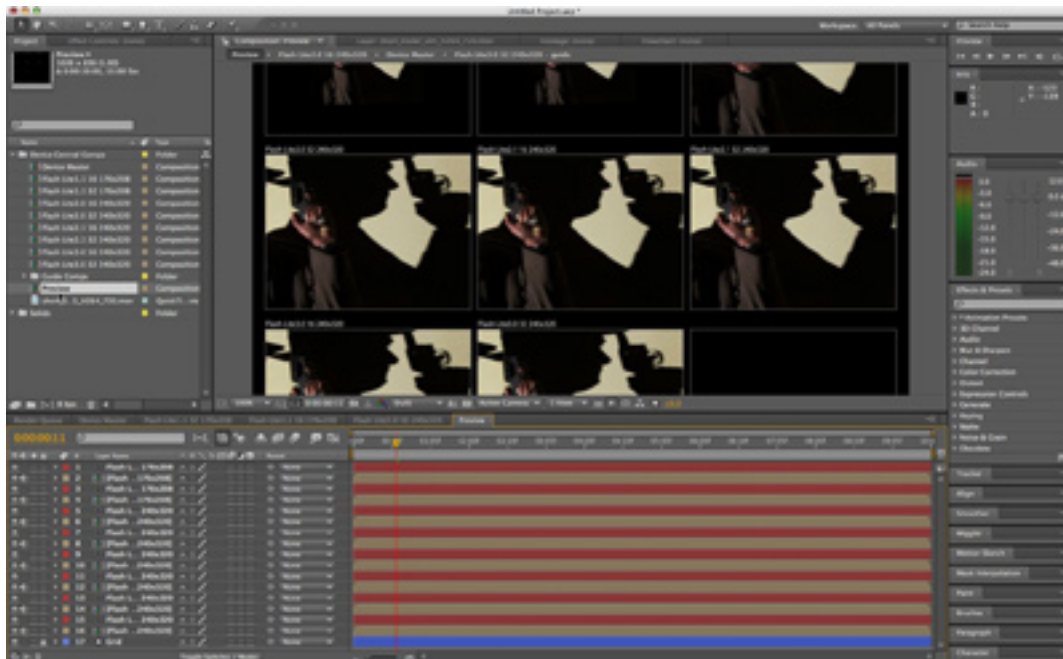


Figure 4: Previewing compositions

11. Hide the rest of the panels and zoom in to focus on the video in the Preview panel.

*Note:* You can also reposition the images for better viewing.

12. Press the spacebar to play the video back on all of the devices at once.

## Where to go from here

[Adobe Device Central CS4 Help and Support Center](#)

[Learn Adobe Device Central CS4](#)

[Introducing Adobe Device Central](#), by Liz Myers

[Automating testing of mobile content](#), by Liz Myers

[Managing mobile projects](#), by Liz Myers

[Lynda.com](#)



This work is licensed under a [Creative Commons Attribution-NonCommercial-Share Alike 3.0 Unported License](#).