

Learn Device Central CS4

# Managing mobile projects

Now you can combine your device profiles, resource files, and common tasks in one location. The new Project Management window in Adobe® Device Central CS4 provides links to assets, devices, and automated tasks. In this movie, you will learn to navigate the Project Management window

## REQUIREMENTS

To complete the task(s) demonstrated in this tutorial, you will need the following software and files:

- **Products** – Adobe Device Central CS4
- **Sample file** – lrvid4103\_dc.zip
- **Prerequisite knowledge** – Basic knowledge of navigating Device Central

## Navigating the Resource Files panel

Navigating the Resources Files panel is straightforward once you have opened the Project Management window. To open the Project Management window:

1. Choose File > New Project to open a new project. Go to File > Open to open an existing project. In either case, the Project Management Window opens.
2. Expand the Resource Files panel located at the top of the Project Management window.

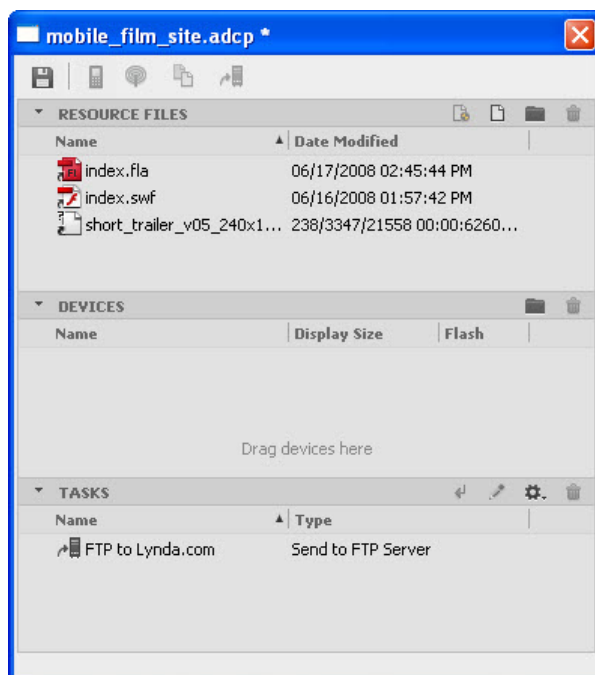


Figure 1: The Resource Files pane is located in the Project Management window



**Note:** The Resource Files panel is where you can save links to Adobe Photoshop®, Adobe Flash®, Adobe Illustrator®, and Adobe After Effects®.

3. Double-click a native file in the Resource Files pane to start the associated application, such as Photoshop.
4. Double-click a SWF file to open it in the device emulator in Device Central.

## Navigating the Devices and Tasks panels

1. Expand the Devices pane.
2. To add a device profile to the Project Management window, drag the profile to the Devices pane.

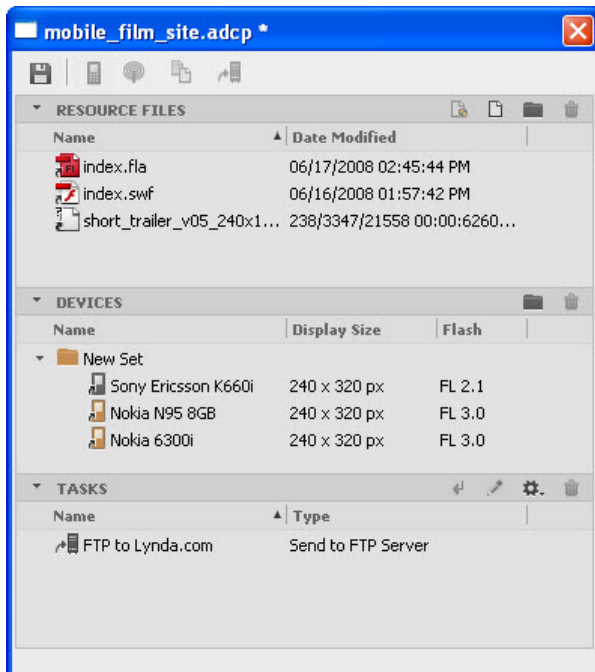


Figure 2: Drag devices to the Devices pane to link them to your project

3. Expand the Tasks pane.

4. Select a task and click the Run Task icon. The Run Task icon is the first icon from the left in the pane's control bar.

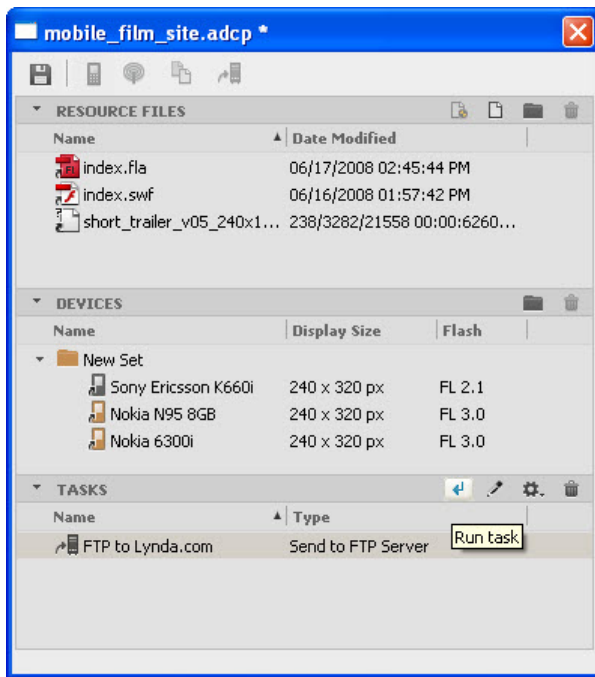


Figure 3: The Tasks pane

5. Once you click the Run Task icon, the Run Task dialog box opens. Verify the details of the task and click Save And Run to run the task.

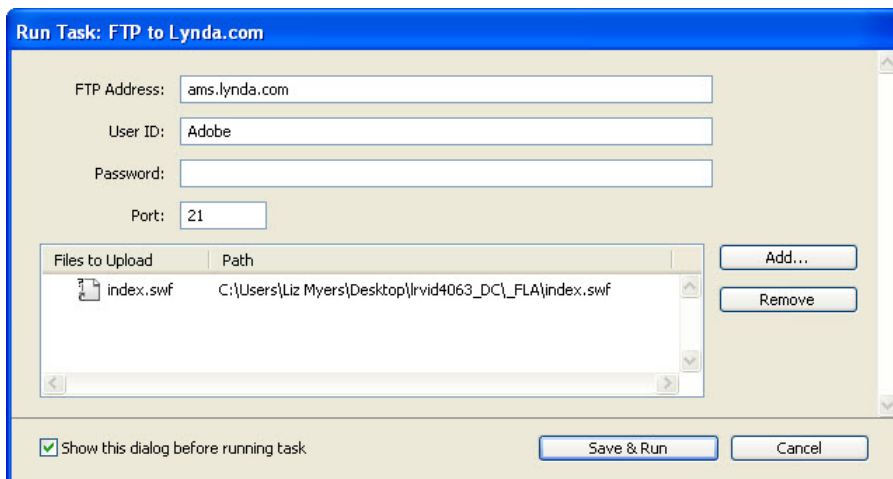


Figure 4: The Run Task dialog box

## Where to go from here

[Adobe Device Central CS4 Help and Support Center](#)

[Learn Adobe Device Central CS4](#)

[Introducing Adobe Device Central CS4](#), by Liz Myers

[Automating testing of mobile content](#), by Liz Myers

[Creating After Effects mobile compositions](#), by Liz Myers

[Lynda.com](#)



This work is licensed under a [Creative Commons Attribution-NonCommercial-Share Alike 3.0 Unported License](#).